

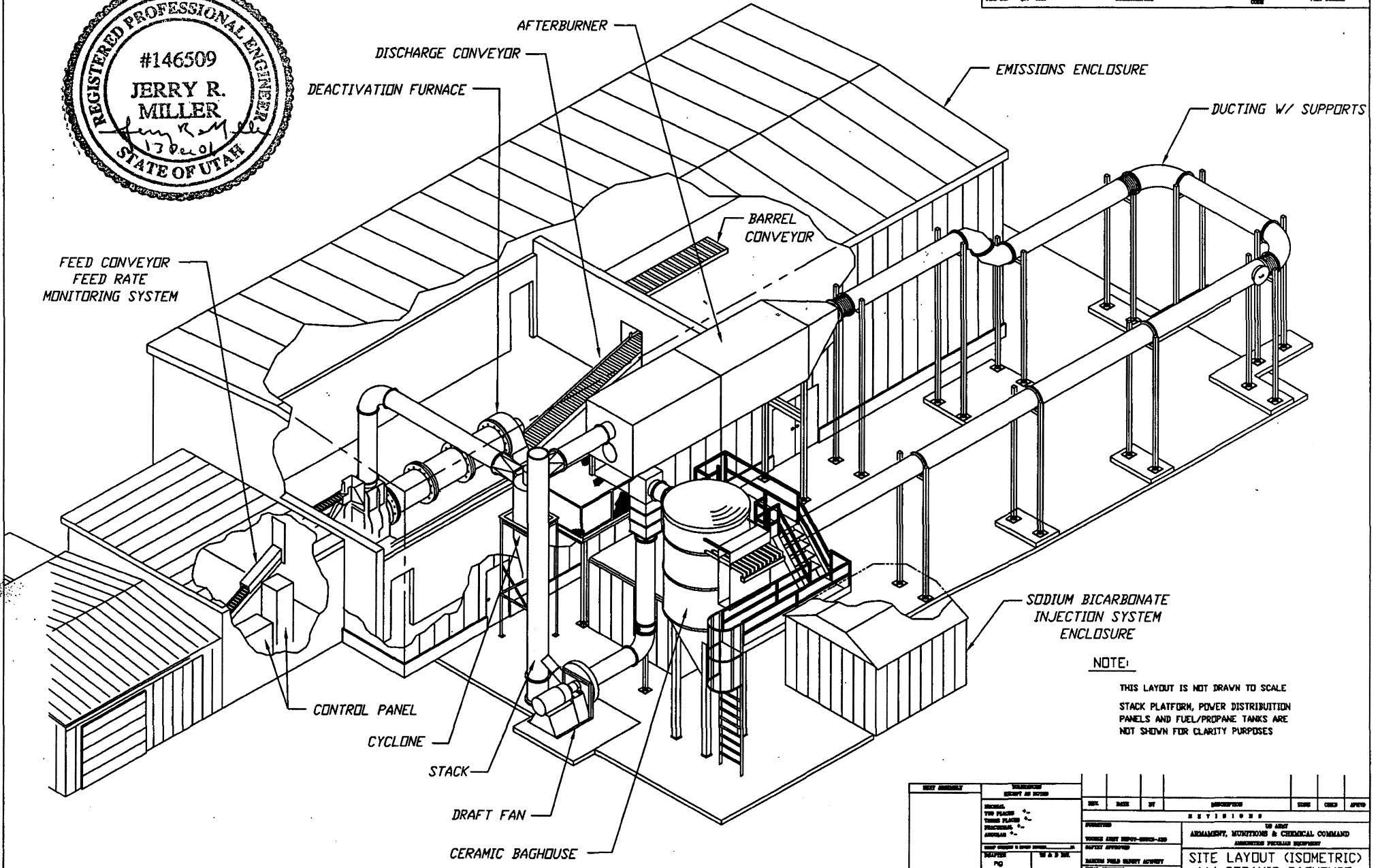
ATTACHMENT 10
APE 1236 DRAWINGS

Attachment 10
APE 1236 Drawings

Number	Date	Title
HWI-PERMIT-01	13-Dec-06	Site Layout (Isometric) w/ Ceramic Baghouse
HWI-PERMIT-02	13-Dec-06	APE 1236 w/ Ceramic Baghouse Site Layout (Plan)
HWI-PERMIT-03	21-Sep-10	APE 1236 w/ Ceramic Baghouse Site Layout Elevation
HWI-PERMIT-04	21-Sep-10	APE 1236 w/ Ceramic Baghouse Site Layout Elevation
HWI-PERMIT-05	13-Dec-06	APE 1236 w/ Ceramic Baghouse Furnace Site Elevation
HWI-PERMIT-06	13-Dec-06	APE 1236 w/ Ceramic Baghouse Furnace Assembly
HWI-PERMIT-07	13-Dec-06	Cast Retort Sections Details and Assembly
HWI-PERMIT-08	13-Dec-06	Cast Retort Sections Details and Assembly
HWI-PERMIT-09	9-Jan-07	Burner and Blower Assembly
HWI-PERMIT-10	9-Jan-07	Burner and Blower Assembly and Details
HWI-PERMIT-17	13-Dec-06	Afterburner Assembly
HWI-PERMIT-20	13-Dec-06	Cyclone Assembly
HWI-PERMIT-21	21-Sep-10	Ceramic Baghouse
HWI-PERMIT-22	13-Dec-06	Draft Fan
HWI-PERMIT-23	21-Sep-10	Stack Platform
HWI-PERMIT-24	10-Jan-08	Exhaust Stack
HWI-PERMIT-25	10-Jan-08	Exhaust Stack Details
HWI-PERMIT-31	9-Jan-07	Gas Monitoring Sample Probe
HWI-PERMIT-32	9-Jan-07	CO & O2 Monitoring Sample System
HWI-PERMIT-36	9-Jan-07	Furnace Control Diagram
HWI-PERMIT-45	13-Dec-06	Conduit Routing Layout



PARTS LIST			
PART NO.	QTY	UNIT	PART NUMBER

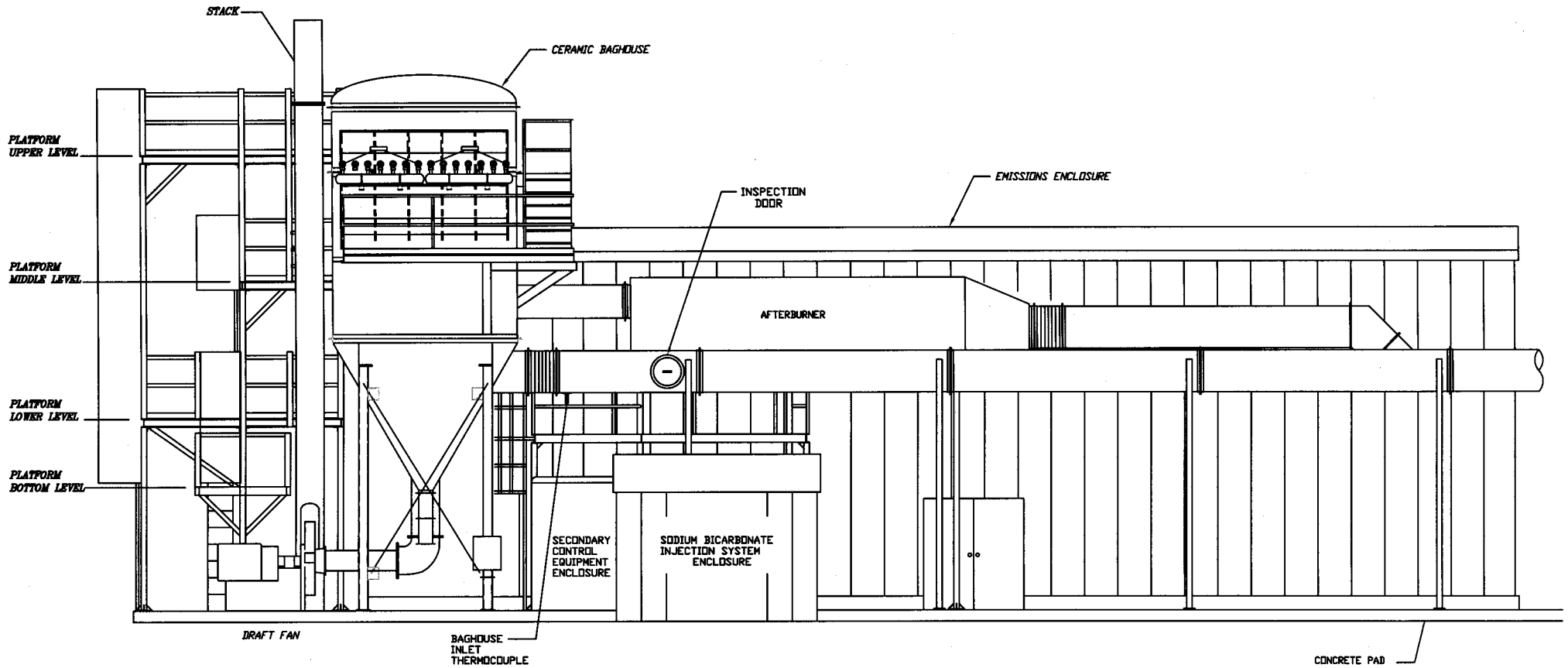


NOTE:
 THIS LAYOUT IS NOT DRAWN TO SCALE
 STACK PLATFORM, POWER DISTRIBUTION
 PANELS AND FUEL/PROPANE TANKS ARE
 NOT SHOWN FOR CLARITY PURPOSES

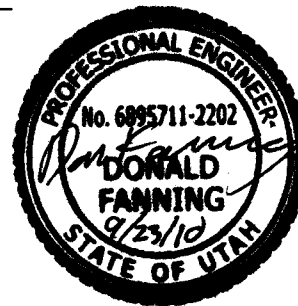
DESIGN APPROVAL	CONSTRUCTION	REV.	DATE	BY	DESCRIPTION	ISSUE	CHG	APPROV
ORIGINAL TWO PLACES THREE PLACES FIVE PLACES APPROVAL	RECEIVED DEPT OF DEFENSE				REVISIONS 1. TO ADD ARMAMENT, MONITORING & CERAMICAL COMMAND AUTOMATIC FUELLED EQUIPMENT			
	DESIGNED BY DRAWN BY CHECKED BY IN CHARGE BY	APPROVED BY APPROVED BY APPROVED BY APPROVED BY				SITE LAYOUT (ISOMETRIC) W/ CERAMIC BAGHOUSE TODELE ARMY DEPOT		
					DATE: 21024 P HWI-PERMIT-01			

PARTS LIST

PART NO.	QTY	UNIT	DESCRIPTION	MANUFACTURER	PART NUMBER
----------	-----	------	-------------	--------------	-------------



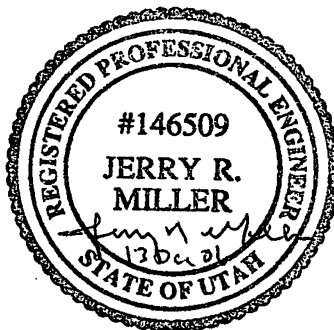
VIEW 'B-B'



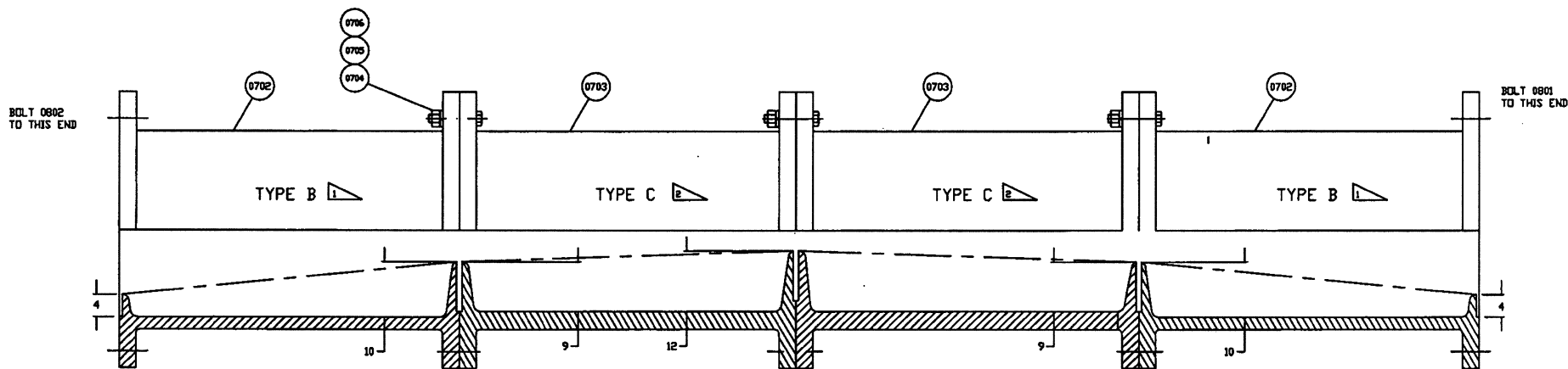
REV	DATE	BY	DESCRIPTION	DATE	CHKD	APPRD
			REVISIONS			
			TO ARMY			
			ARMAMENT, MUNITIONS & CHEMICAL COMMAND			
			AMMUNITION SPECIALIST EQUIPMENT			
			APE 1236 W/CERAMIC BAGHOUSE			
			SITE LAYOUT ELEVATION			
			TIDELE ARMY DEPOT			
			DATE: 21SEP10			
			SCALE: 1/32" = 1'-0"			
			NO. 21824			
			HWI-PERMIT-04			

NOTES:

- 1 TYPE "B", TWO RETORT SECTIONS SHALL BE THE SAME AS SHOWN EXCEPT THAT THE SPIRAL SHALL BEGIN AT A HEIGHT OF FOUR(4) INCHES AND INCREASE UNIFORMLY TO A HEIGHT OF TEN (10) INCHES OVER THE LENGTH OF THE SECTION. MACHINE RELIEF IN FACE OF 10" SPIRAL ONLY THAT FACE WHICH MATCHES TYPE "B" SECTION TO TYPE "A" SECTION.
- 2 TYPE "C", LEAD OF SPIRALS IS 30° UNIFORMLY ON THEIR PERIPHERY. A TRANSITION FROM 9" TO 12" IN HEIGHT IS MADE IN THE FIRST 180° TO MATE WITH OTHER INCREMENTS. PERFORM THIS TRANSITION ON ONE END ONLY. MACHINE RELIEF IN FACE OF SPIRAL AT EACH END.
- 3 PATTERNS, SN4925-1236-P100 AVAILABLE AT TOOLEE ARMY DEPOT.
- 4 ANY REPAIR OF THE STEEL CASTING THAT MAY BE REQUIRED WILL BE IN ACCORDANCE WITH ASTM A488M-88 OR LATEST EDITION.

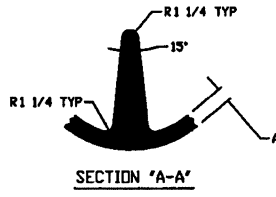


PARTS LIST				
PART NO.	QTY	REF	DESCRIPTION	PART NUMBER
			DO NOT REUSE PART NUMBER 12360701 TO AVOID PART NUMBER DUPLICATION	12360701
	2		RETORT, TYPE "B" IN ACCORDANCE WITH APE 1236 ASTM A217M-91 STEEL, GRADE VC-9, 2 1/4 WALL X 50 O.D. X 60 LONG	12360702
	2		RETORT, TYPE "C" IN ACCORDANCE WITH APE 1236 ASTM A217M-91 STEEL, GRADE VC-9, 2 1/4 WALL X 50 O.D. X 60 LONG	12360703
0704	45		CAPSCREW, HEX HEAD 1 1/2-6UNC-2A X 8 LG	
0705	45		MUT, 1 1/2-6UNC-2B	
0706	45		WASHER, LOCK 1 1/2	

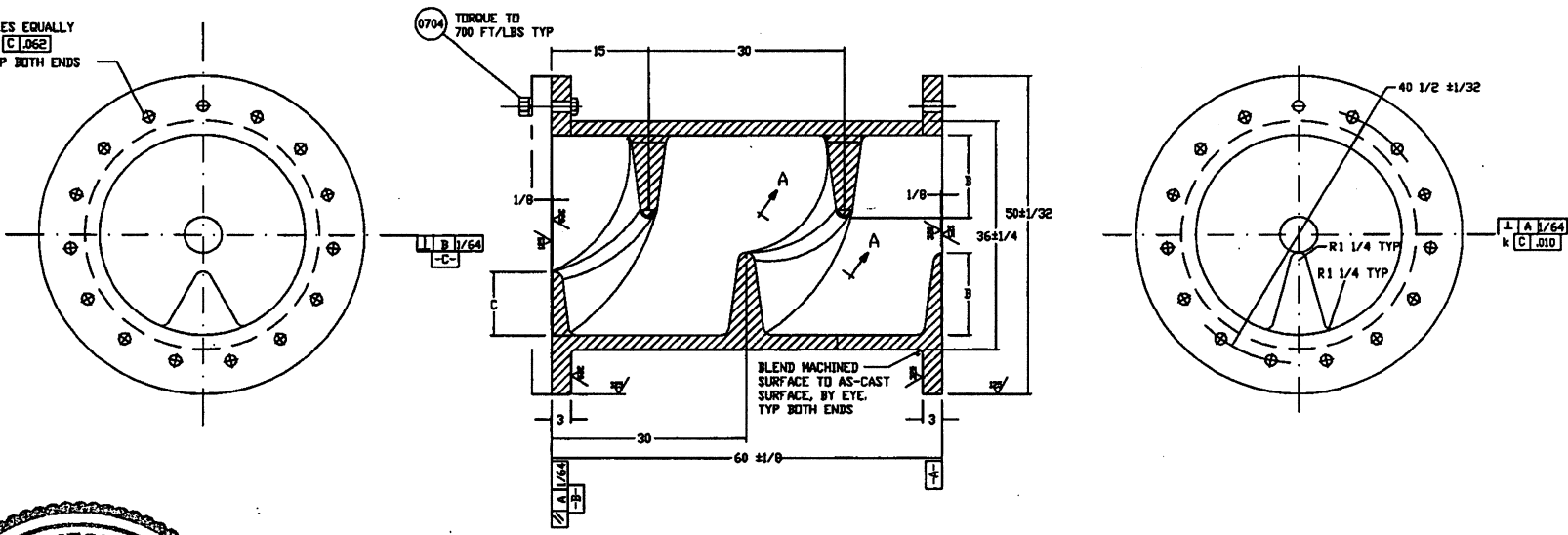


ASSEMBLY

NEW ASSEMBLY 1236M1-02	MANUFACTURER DESIGNS BY: _____ DRAWN BY: _____ CHECKED BY: _____ DATE: _____	DATE: _____ TIME: _____ BY: _____	DESCRIPTION: _____ DATE: _____ CHECKED: _____ APPROVED: _____
		DIVISION: _____ OF ARMY ARMAMENT, MUNITIONS & CHEMICAL COMMAND AMMUNITION SPECIAL EQUIPMENT	
SUBMITTED BY: _____ CHECKED BY: _____ DATE: _____		CAST RETORT SECTIONS DETAILS AND ASSEMBLY	
DRAWN BY: _____ CHECKED BY: _____ DATE: _____		SHEET NO. 21824 OF 1 DATE: 1/8-1 REV: 1 OF 1	



1 3/4 DIA. 15 HOLES EQUALLY SPACED @ 24" k C .062 DN 40 1/2 B.C. TYP BOTH ENDS

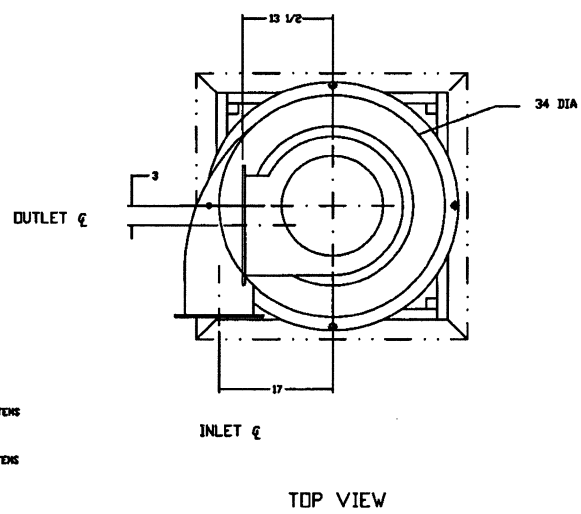
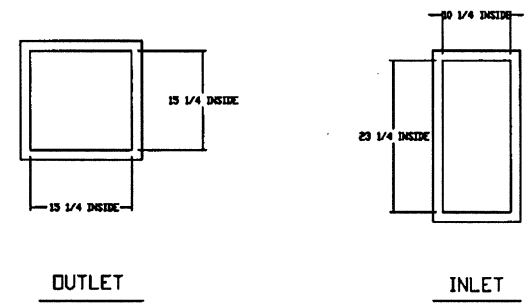
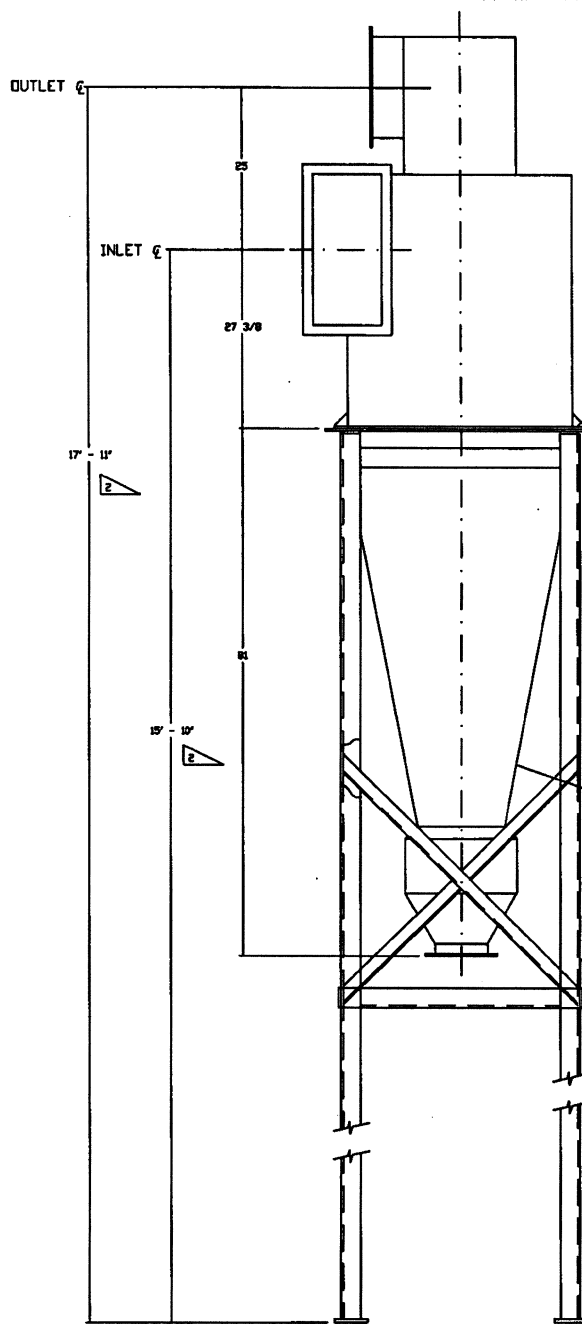


- 0701 TYPE 'A' DELETED (SEE ECD 806-95)
- 0702 TYPE 'B'
- 0703 TYPE 'C'

	DIM A	DIM B	DIM C
0701	2 1/4	13	10
0702	2 1/4	10	4
0703	3 1/4	12	9

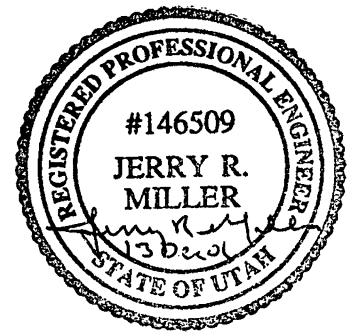
ALL ± 1/4 TOLERANCE

REV	DATE	BY	DESCRIPTION	ENG	CHKD	APPD
1						
123641-07, SHT 1 OF 2			CAST RETORT SECTION DETAILS AND ASSEMBLY			
SPECIAL: TYP PLACES - TYP PLACES - FINISHES: -1/32 FINISHES: -1/32			IN ACCORD WITH THE ARMAMENT, MUNITIONS & CERAMICAL COMMAND ASSIGNED PROGRAM REQUIREMENT			
CASE NO. 21824			PERMIT NO. HWI-PERMIT-08			
DATE: 9/27/99			SCALE: 1/8" = 1"			



PARTS LIST					
PART NO.	QTY	UNIT	DESCRIPTION	INSPECTION CODE	PART NUMBER
			DO NOT REUSE THIS PART NUMBER 12364300 TO AVOID PART NUMBER DUPLICATION		
	1		CYCLONE DUST COLLECTOR, CENTRIFUGAL W/ INSPECTION DOOR, SIZE 363, TYPE VM REF: BAGHOUSE MODEL NO. 700/150		12364302
4303	4		CAPSCREW, HEX HEAD, STEEL, METRIC/INCH SIZE MATCH CYCLONE		

PARTS LIST CONTINUED ON DWG 123643-43 SHIT 2



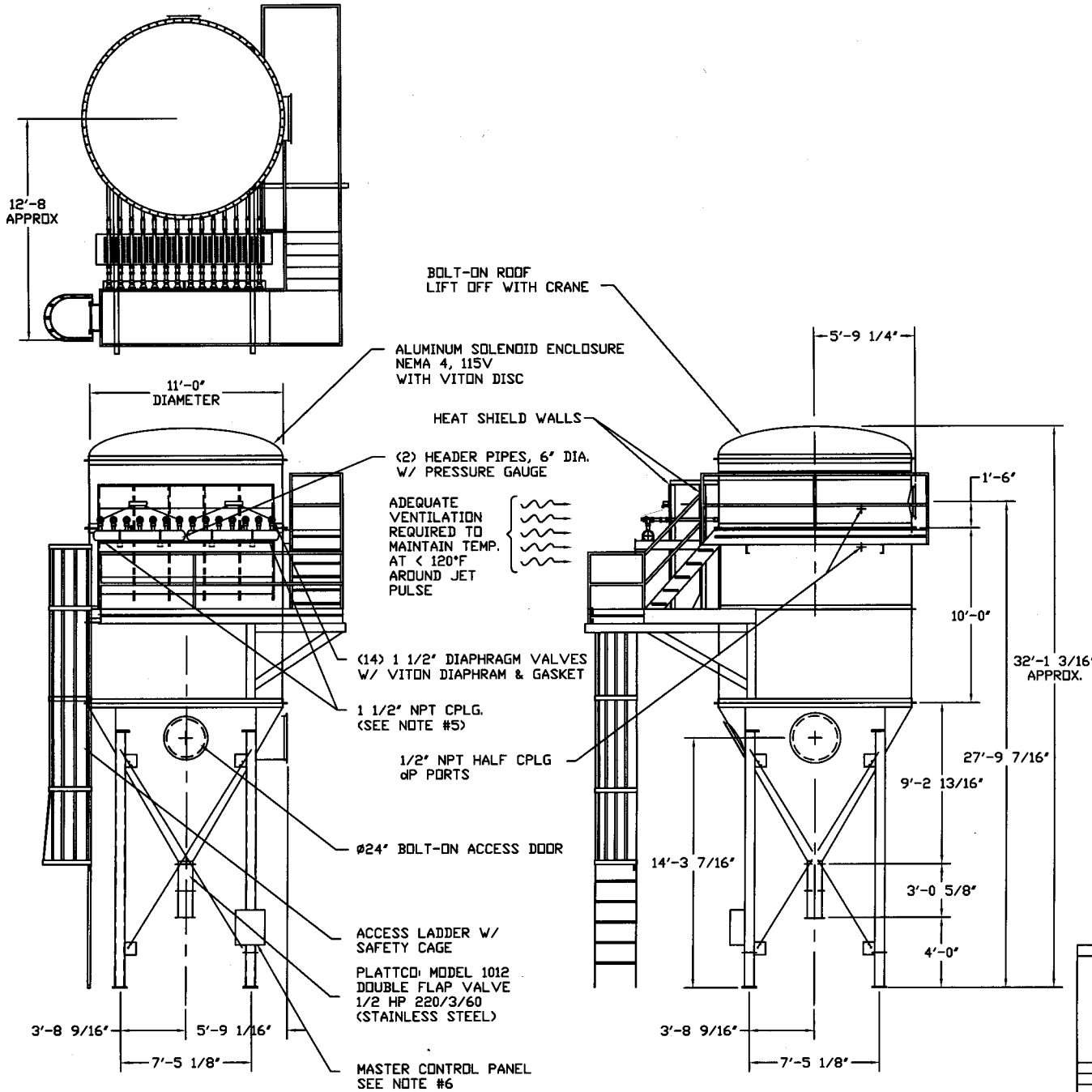
NOTES:

- 1- CYCLONE SUPPORT FRAME TO BE ANCHORED WITH 1/2 DIA EXPANSION ANCHOR BOLTS
- 2- SOME FURNACE SITES WILL PROCESS ITEMS WITH HIGHER LEAD CONTENT AND MAY NEED TO MOVE THE CYCLONE AND ADD AN EXPANSION CHAMBER TO THE HIGH TEMP HEAT EXCHANGER. USE THE PROPER CYCLONE SUPPORT FRAME AS FOLLOWS:
 - HIGH LEAD CONTENT ITEMS
 - USE LOW PROFILE SUPPORT FRAME (ITEM 4304)
 - MAINTAIN 17" HEIGHT FROM THE GROUND TO CENTER OF THE OUTLET FLANGE OF THE CYCLONE. PLACE CYCLONE BETWEEN THE FURNACE AND THE AFTERBURNER
 - LOW LEAD CONTENT ITEMS
 - USE HIGH PROFILE SUPPORT FRAME (ITEM 4305)
 - MAINTAIN 16" HEIGHT FROM THE GROUND TO CENTER OF THE INLET FLANGE OF THE CYCLONE. PLACE CYCLONE BETWEEN THE HIGH TEMP HEAT EXCHANGER AND THE BAGHOUSE

DO NOT SCALE DWG				REVISIONS			
REV	DATE	BY	DESCRIPTION	ISSUED	CHECK	APPROV	
123643-01							
ORIGINAL THIS DRAWING PREPARED BY DATE 1/15				ARMAMENTRY, METEOROLOGY & CHEMICAL COMMAND AMERICAN PACIFIC AIR FORCE			
CHECKED BY DATE PROJECT CODE				CYCLONE ASSEMBLY 21624 F HWI-PERMIT-20 1 of 1			

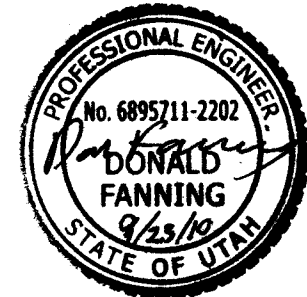
PARTS LIST

PART NO.	QTY	UNIT	DESCRIPTION	MANUFACTURER CODE	PART NUMBER
----------	-----	------	-------------	-------------------	-------------

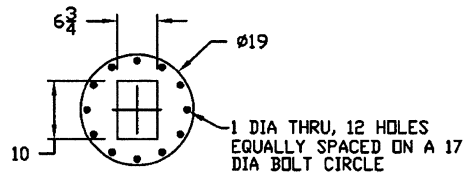
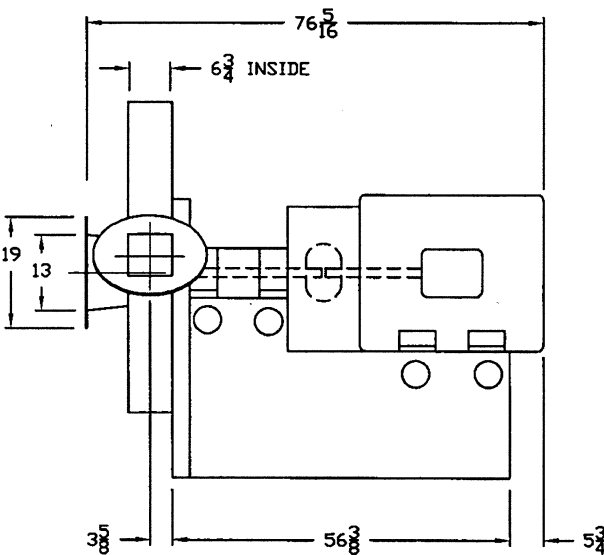
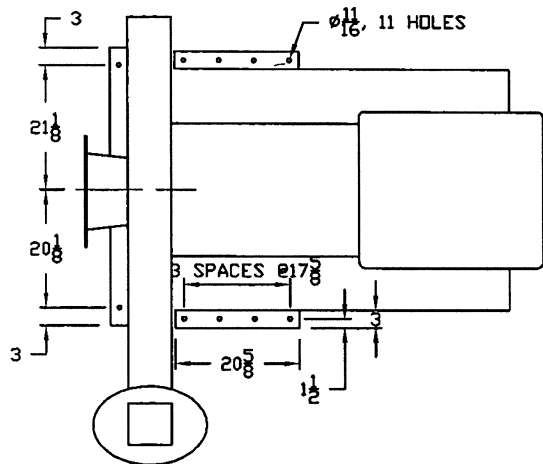


SPECIFICATIONS:

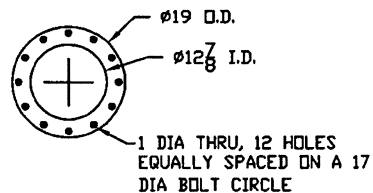
- MODEL: CF-154-HC
- CONSTRUCTION:
 - DESIGN PRESSURE: -30" V.G.
 - DESIGN TEMPERATURE: 1000°F MAX.
 - DESIGN WIND SPEED: 130 MPH
 - WALKWAYS & SUPPORT STEEL: CARBON STEEL
 - EXTERIOR: CARBON STEEL
 - WALLS: 7 GA. 304 SS
 - TUBE SHEET: 5/16" PL. 304 SS
 - BLOW TUBES: STAINLESS STEEL
 - HEADER PIPE: STAINLESS STEEL
 - DIAPHRAGM VALVES: ALUMINUM
 - DIAPHRAGM PILD: COPPER TUBING
 - SOLENOID VALVES: ALUMINUM
- PAINT: DELETED
- CERAMIC FILTER ELEMENT:
 - QTY: 136 - FILTER AREA: 2040 SQ. FT.
 - MATERIAL: "CERAFIL" CERAMIC FILTER ELEMENT
 - SIZE: 5 3/4" DIA. x 120" LG.
 - VENTURIS: STAINLESS STEEL
- COMP. AIR REQ'D: DELETED
- MASTER CONTROL PANEL:
 - NEMA 4 ENCLOSURE (MOUNTED TO SUPPORT LEG)
 - ADJUSTABLE PULSE TIMERS, 115 VAC
 - DISCONNECT SWITCH
 - 208V MOTOR STARTER, FOR DOUBLE FLAP VALVE
 - START STOP SWITCHES W/ LIGHTS FOR DOUBLE FLAP VALVE AND PULSE CONTROL
 - PULSE CONTROL AND DOUBLE FLAP VALVE FACTORY WIRED
- APPLICATION:
 - PROCESS: INCINERATION
 - MATERIAL: AMMUNITION
 - LOCATION: OUTDOORS
 - AIR VOLUME: 10,200 ACFM @ 1000°F
 - AIR/CLOTH RATIO: 5.0/1
- GROSS WEIGHT: DELETED
- ITEMS ASSEMBLED FOR SHIPPING: DELETED
- ITEMS SHIPPED SEPARATE: DELETED



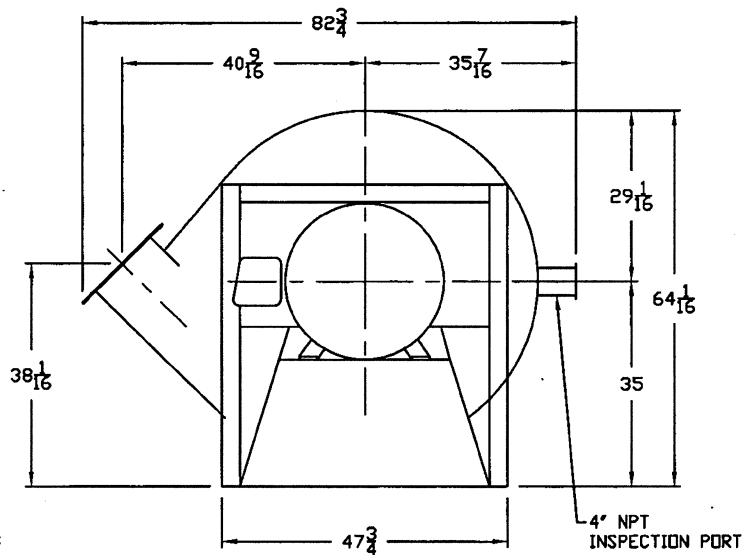
DATE	BY	DESCRIPTION	DATE	BY	DESCRIPTION
		DESIGNED			
		DRAWN			
		CHECKED			
		APPROVED			
		REVISIONS			
		TO JET			
		ARMAMENT, MUNITIONS & CHEMICAL COMMAND			
		AMMUNITION PROGRAMS EQUIPMENT			
		CERAMIC BAGHOUSE			
		TODDLE ARMY DEPOT			
		21624			HWI-PERMIT-21
		DATE 21SEP10			



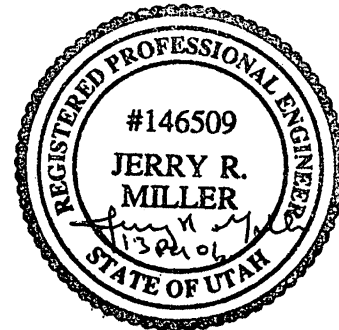
OUTLET FLANGE



INLET FLANGE



PARTS LIST				
ITEM NO.	QTY	DESCRIPTION	MANUFACTURER CODE	PART NUMBER
1		FAN, 8500 CFM @ 35 INCHES W.G.S.P. RATING AT 0.0252 LBS/CU FT INLET DENSITY 3500 RPM, 1HP - 7.5, 1.0 CAPACITY, 316 SST CONSTRUCTION, 1" NPT HOUSING BRASS REF: FAN EQUIPMENT CO, INC 3925 WEST SUNSET ROAD LAS VEGAS, NV 89118 P/N M-21 I.E. ARR. 1 DWG 2006405		
1		VITH THE FOLLOWING REPLACEMENT PARTS FAN MOTOR, 100 HP, 1800 RPM, 3 PHASE, 60 HZ, 460 VOLT, TEFC FR 405TS, 1.15 SF. REF: RELIANCE ELECTRIC		
2		BEARING, BALL, PULLEY BLOCK, HEAVY DUTY,		
1		FLEXIBLE COUPLING W/ GUARD COILED		
1		SINGLE CARBON RING SHAFT SEAL, COHN CRAND		



NOTES:

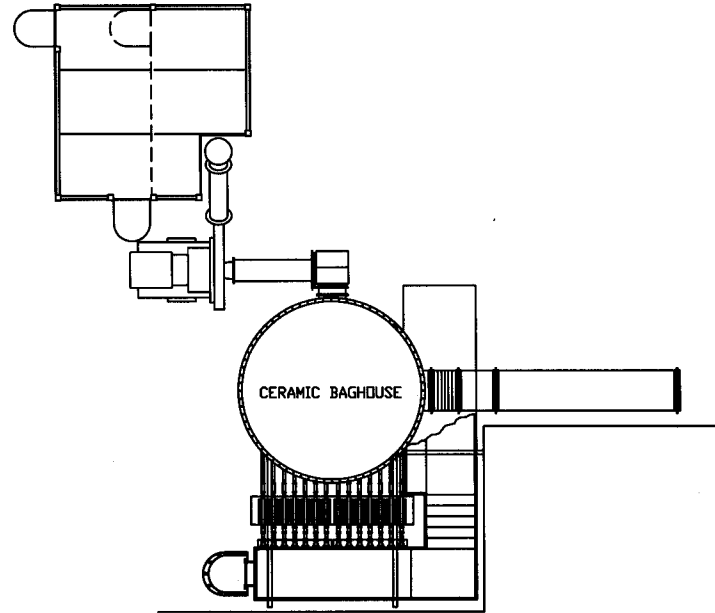
- DIMENSIONS SHOWN ARE FOR REFERENCE ONLY. DRAFT FAN IS A COMMERCIALY FABRICATED ITEM.
- DRAFT FAN TO SECURED TO CONCRETE WITH 5/8 DIA EXPANSION ANCHOR BOLTS

DO NOT SCALE DWG		REV	DATE	BY	DESCRIPTION	CHKD	CHKD	APPROV
DESIGN	REVISIONS							
CHECKED	DATE							
APPROVED	BY							
PROJECT NO. 21024 SHEET NO. 1 OF 1 DATE 16 DEC 06					DRAFT FAN HWI-PERMIT-22			

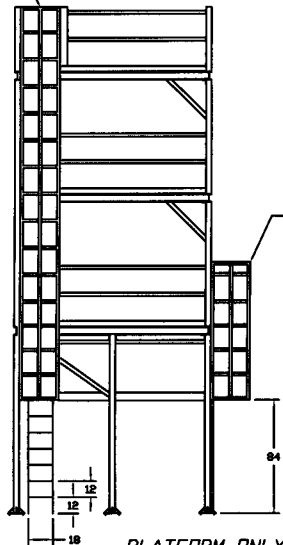
PARTS LIST

ITEM NO.	QTY	UNIT	DESCRIPTION	MANUFACTURER CODE	PART NUMBER
----------	-----	------	-------------	-------------------	-------------

WALL



LADDER WITH SAFETY CAGE



PLATFORM ONLY

STACK

CERAMIC BAGHOUSE

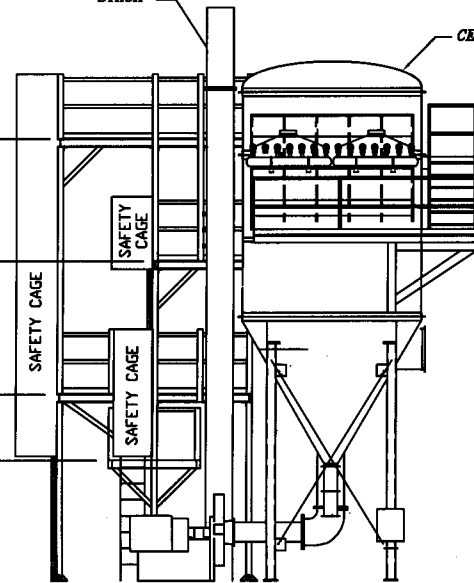
PLATFORM UPPER LEVEL

PLATFORM MIDDLE LEVEL

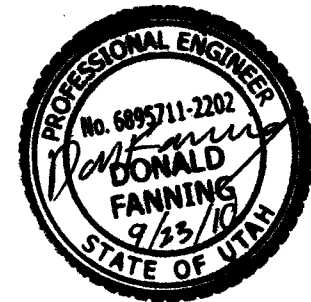
PLATFORM LOWER LEVEL

PLATFORM BOTTOM LEVEL

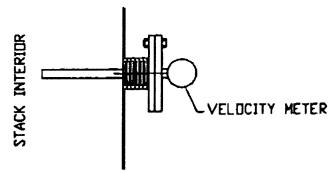
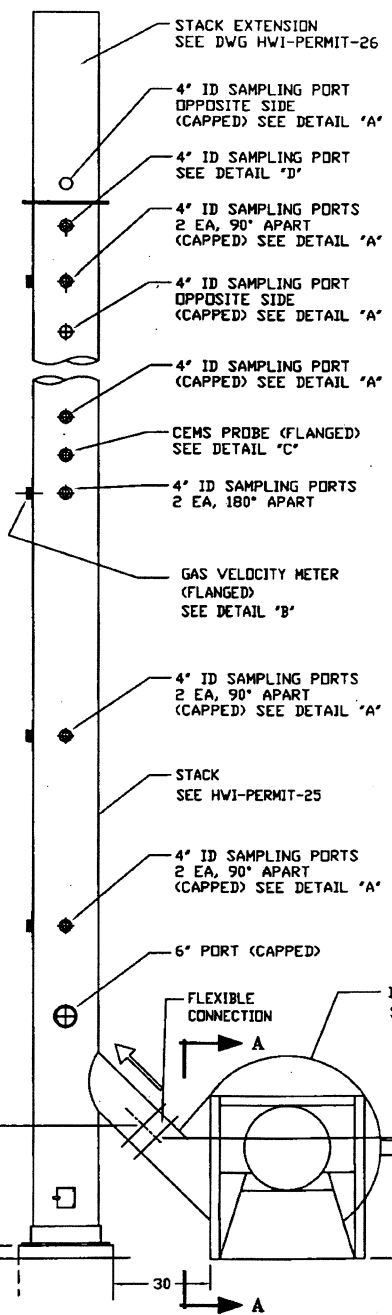
LADDER WITH SAFETY CAGE



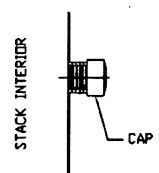
DRAFT FAN



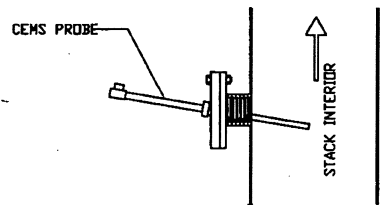
REV. NO.	DATE	BY	DESCRIPTION	SCALE	CHG	APPV
REVISIONS			10 ARMY ARMAMENT, MUNITIONS & CHEMICAL COMMAND AMMUNITION FACILITY EQUIPMENT			
DESIGNER T. TATE CHECKED T. TATE DRAWN T. TATE PROJECT NO. 21624			TOOLS AND EQUIPMENT SAFETY APPROVED APPROVAL FROM SAFETY AGENCY FINAL APPROVAL ARMO-200-10 10 ARMY AGENCY			
USED ON PROJECT ORIGIN			STACK PLATFORM TROUBLE ARMY DEPOT W/ CERAMIC BAGHOUSE HWI-PERMIT-23 DATE 21 SEPT 10			
			SHEET 1 OF 1			



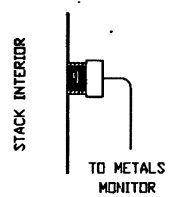
DETAIL 'B'



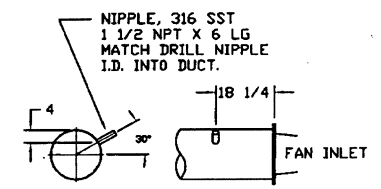
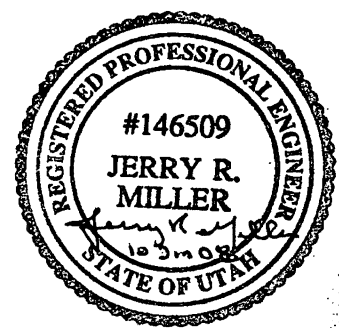
DETAIL 'A'



DETAIL 'C'

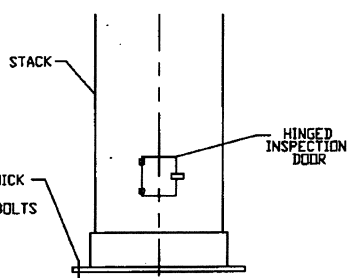


DETAIL 'D'



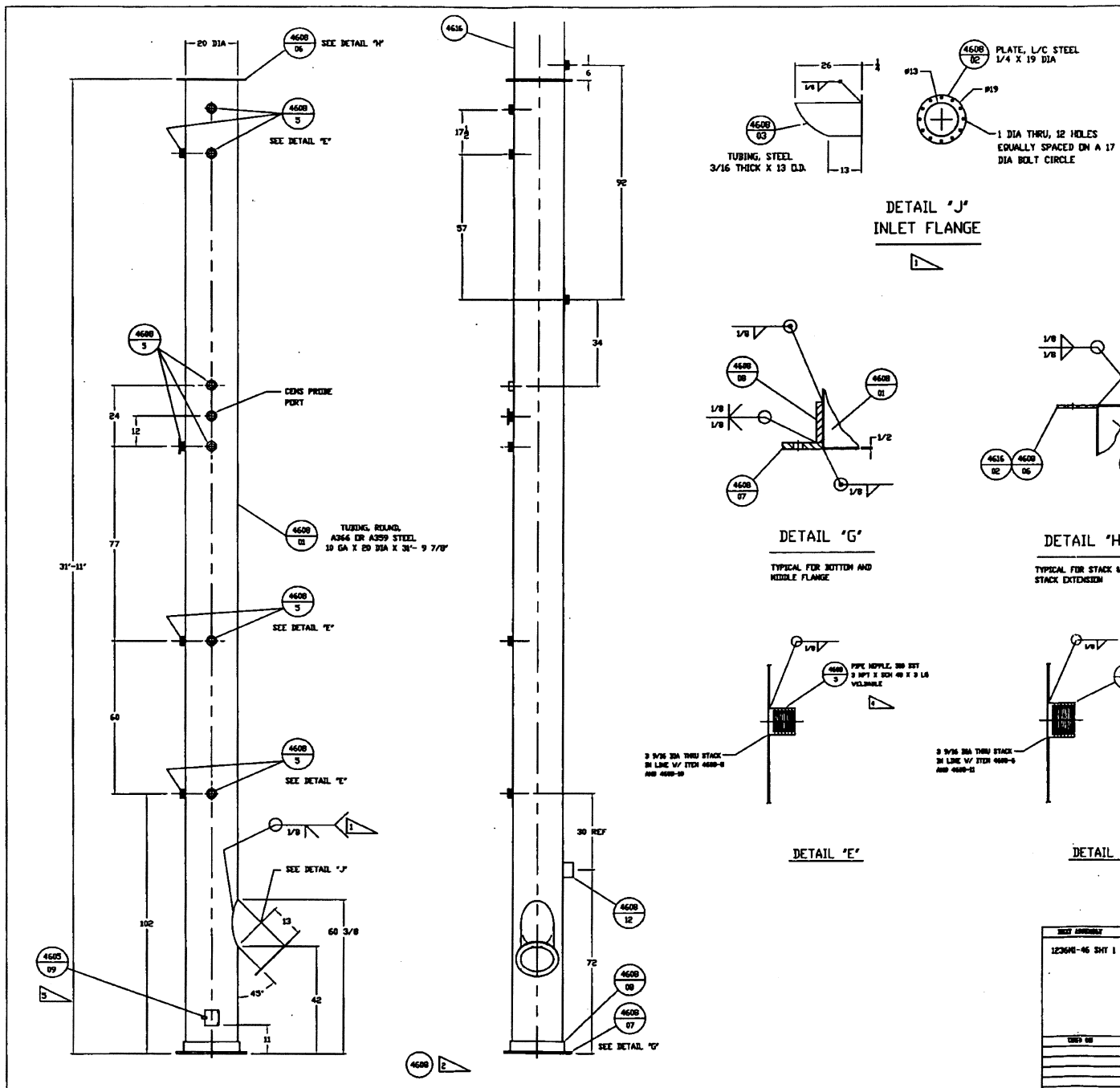
VIEW 'A-A'

DRAFT FAN INLET DUCT



STACK MOUNTING DETAIL

DO NOT SCALE DWG		DATE	ISSUE	BY	DESCRIPTION	DATE	CHKD	APPRD
DESIGNED	BY							
CHECKED	BY							
DRAWN	BY							
SCALE								
PROJECT								
DATE								
REVISIONS: NO. 1 DESCRIPTION DATE					IN AGENCY ARMAMENT, METEOROLOGY & CHEMICAL COMMAND AMERICAN INDIAN UNIVERSITY			
EXHAUST STACK PORT IDENTIFICATION					CASE NO. HWI-PERMIT-24 21624 17MAY07			
					1.15 1 of 1			

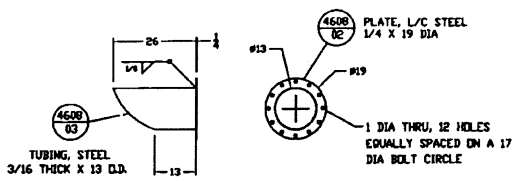


PARTS LIST				
PART NO.	QTY	UNIT	DESCRIPTION	PART NUMBER
4600-1	1		STACK (ELEVATION)	123641-4600
4600-12				

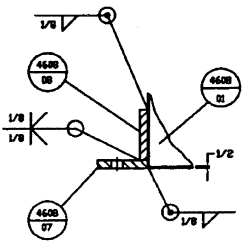
PART NUMBERS SHOWN ARE FOR REFERENCE ONLY
SEE EXISTING APE 123641 DRAWING PACKAGE

NOTES

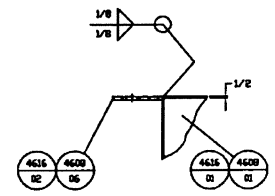
1. FABRICATE STACK INLET FLANGE APPROX AS SHOWN AFTER STACK AND DRAFT FAN HAVE BEEN LOCATED. INTERSECT COPED TO THE 13 DIA DUCT TO THE STACK @ 45°, WELD ALL AROUND. PROVIDE 13" VISC OVAL CUTOUT IN THE STACK TO MATCH 13" OF THE 13" DUCT PRIOR TO WELDING.
2. ALL DUCT WELDS ARE TO BE FULL PENETRATION BUTT WELDS UNLESS OTHERWISE NOTED. STACK VERTICAL SEAMS TO BE ROTATED GREATER THAN 30° FROM ABLEADING VERTICAL SEAM.
3. CUT GASKET MATERIAL TO FIT AND BOND TO THE DRAFT FAN OUTPUT FLANGE AND STACK INPUT FLANGE.
4. PIPE NIPPLE 07/M 4600-5 & 12/2 WILL BE MODIFIED AND/OR ASSEMBLED SO THAT IT WILL FIT THE CENTER OF THE EXHAUST STACK AND WILL NOT PROTRUDE INTO THE STACK.
5. PROVIDE HINGE AND LATCH WITH INSPECTION DOOR CIVEN 4600-09. INSPECTION DOOR TO BE POSITIONED OVER A 5 1/2 X 5 1/2 CUTOUT THRU STACK WALL. WELDED CONSTRUCTION.



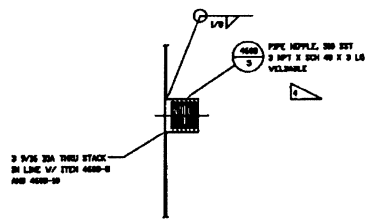
DETAIL 'J'
INLET FLANGE



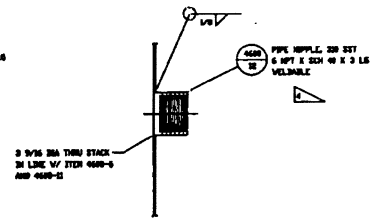
DETAIL 'G'
TYPICAL FOR BOTTOM AND MIDDLE FLANGE



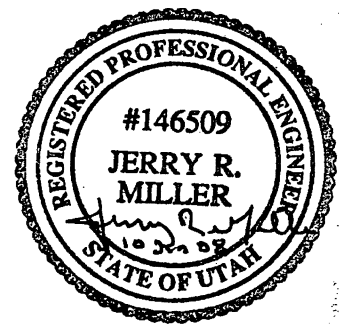
DETAIL 'H'
TYPICAL FOR STACK & STACK EXTENSION



DETAIL 'E'

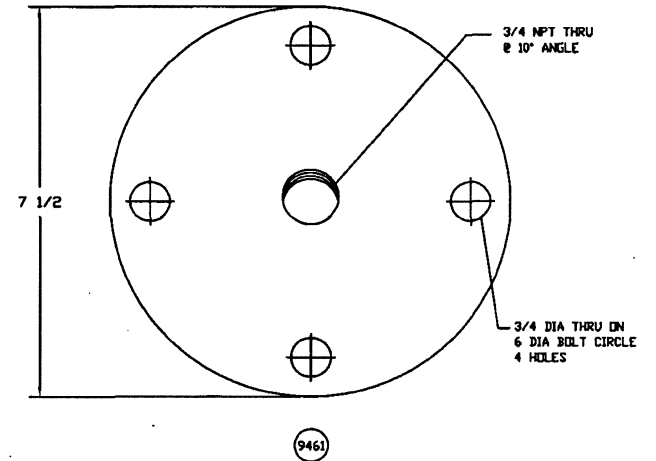
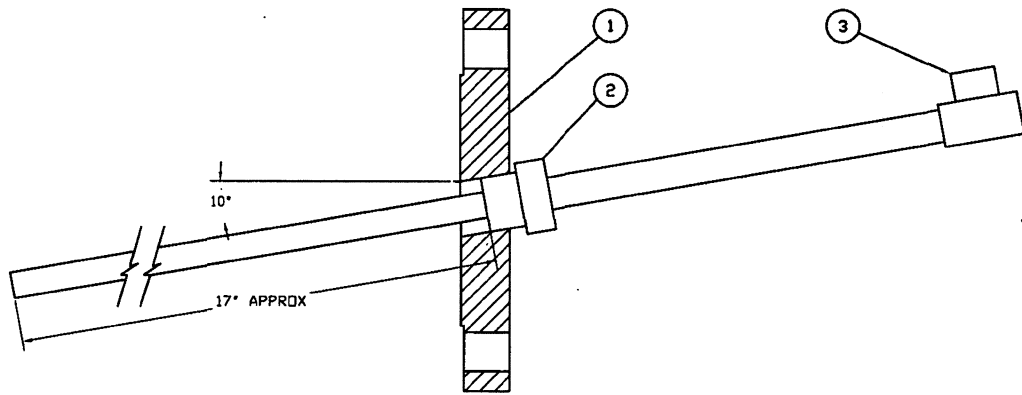


DETAIL 'F'



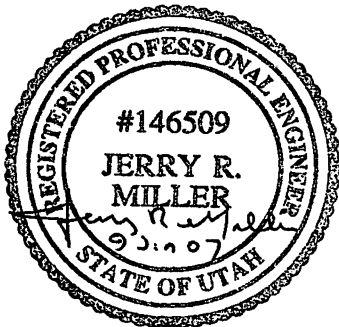
DRAWING		REVISION		DATE	BY	CHKD	APP'D
123641-46 SHT 1							
DESIGN: JRM CHECKED: JRM DRAWN: JRM SCALE: AS SHOWN PROJECT: EXHAUST STACK		APPROVED: JRM DATE: 10/24/07		AUTHORITY: ARMAMENT, MUNITIONS & CHEMICAL COMMAND DRAWING NUMBER: 123641-46 SHT 1			
TITLE: EXHAUST STACK DETAILS		SHEET NO: 21624		DATE: 17MAY07			

PARTS LIST					
PART NO.	QTY	UNIT	DESCRIPTION	MANUFACTURER CODE	PART NUMBER
1	1		FLANGE, BLIND, CARBON STEEL, 3" 150 LB, MODIFIED AS SHOWN		
2	1		SAMPLE PROBE, SST REF: SOUTHERN TECHNOLOGIES		
3	1		TEE, PIPE, STEEL, 150 LB 3/8 NPTF X 3/8NPTF X 1/4NPTF		



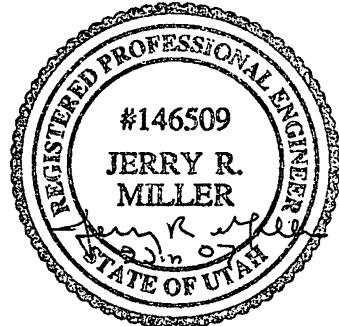
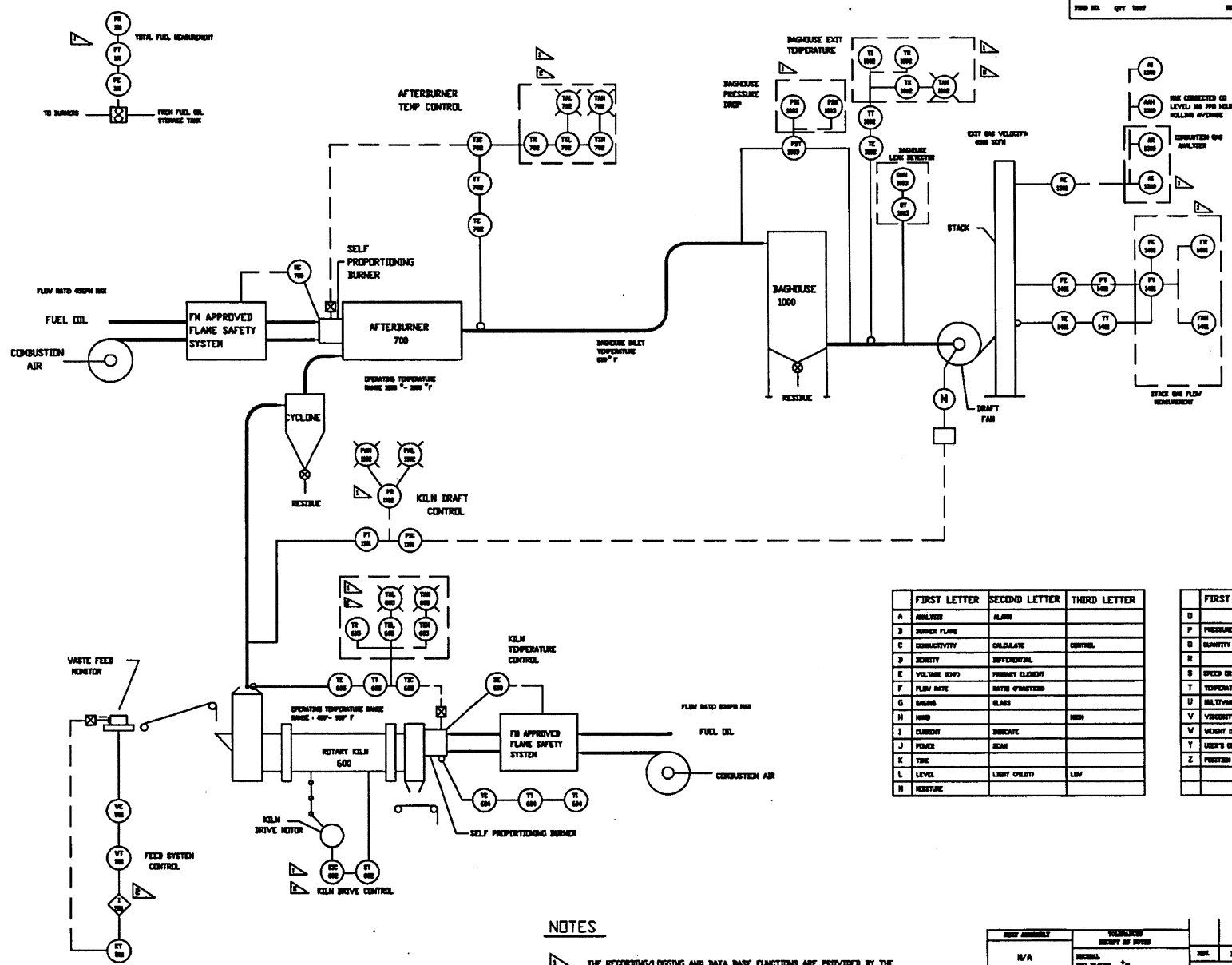
NOTES

- 1- USE TEFLON TAPE ON PIPE THREADS FOR TEMPERATURES LESS THAN 500° F. FOR SERVICE TEMPERATURES ABOVE 500° F USE JET LUBE NIKAL HIGH TEMPERATURE THREAD LUBRICANT OR EQUAL.



PART ASSEMBLY		REVISIONS		REV.	DATE	BY	DESCRIPTION	DATE	USED	APPROV.
N/A		REVISIONS								
MATERIAL: 304 STAINLESS STEEL FINISH: POLISHED DIMENSIONS: AS SHOWN TOLERANCES: ±.005 SURFACE: RA. 1.6 THREADS: 3/8 NPTF WEIGHT: 0.15 LBS PART NO.: 21624		REVISIONS 1- 03/10/07 2- 03/10/07		IN ARMY ARMAMENT, BUNTING & CHEMICAL COMMAND AMMUNITION REGULAR EQUIPMENT GAS MONITORING SAMPLE PROBE CASE NO. 21624 DATE 15APR01						

PARTS LIST			
PART NO.	QTY	UNIT	DESCRIPTION
			MANUFACTURE CODE
			PART NUMBER



FIRST LETTER	SECOND LETTER	THIRD LETTER
A	ANALYZER	ALARM
B	BURNER FLAME	
C	CONDUCTIVITY	CALCULATE CONTROL
D	DENSITY	DIFFERENTIAL
E	VOLUME (GPM)	PRIORITY ELEMENT
F	FLOW RATE	RATE OF FUNCTION
G	GAS	GLASS
H	HIGH	HIGH
I	CURRENT	INDICATE
J	POWER	SEAL
K	TIME	
L	LEVEL	LOW
M	MOISTURE	

FIRST LETTER	SECOND LETTER	THIRD LETTER
D	DIFFERENCE	
P	PRESSURE OR VACUUM	POINT
D	QUANTITY OR EVENT	INTERMEDIATE OR TOTALIZE
R		RECORD OR PRINT
S	SPEED OR FREQUENCY	SWITCH
T	TEMPERATURE	TRANSMIT
U	UNIVERSAL	MULTIFUNCTION
V	VELOCITY	VALVE
V	WEIGHT OR FORCE	WELL
Y	USER'S CHOICE	COMPUTER
Z	POSITION	DRIVE

NOTES

- 1. THE RECORDING, LOGGING AND DATA BASE FUNCTIONS ARE PROVIDED BY THE COMPUTER PORTION OF THE CONTROL SYSTEM
- 2. THE LOGICAL CONTROL FUNCTIONS ARE PROVIDED BY THE PROGRAMMABLE LOGIC CONTROLLER (PLC) PORTION OF THE CONTROL SYSTEM

REV	DATE	BY	DESCRIPTION	ISSUED	CHECK	APPROVED
N/A						

DESIGNED BY	DATE	BY	DESCRIPTION
REVISION			
APPROVED BY			
DATE			

ARMAMENT, MUNITIONS & CEREMONIAL COMMAND	ARMED & READY
ARMED & READY	ARMED & READY
ARMED & READY	ARMED & READY
ARMED & READY	ARMED & READY

PROJECT NO.	21624	REV.	1
PROJECT NAME	HWI-PERMIT-36		
DATE	16 DEC 2000	SCALE	NONE
SHEET	1	OF	1

